



# INSTRUCTION MANUAL

## Parts List For

7.5 Ton Forklift

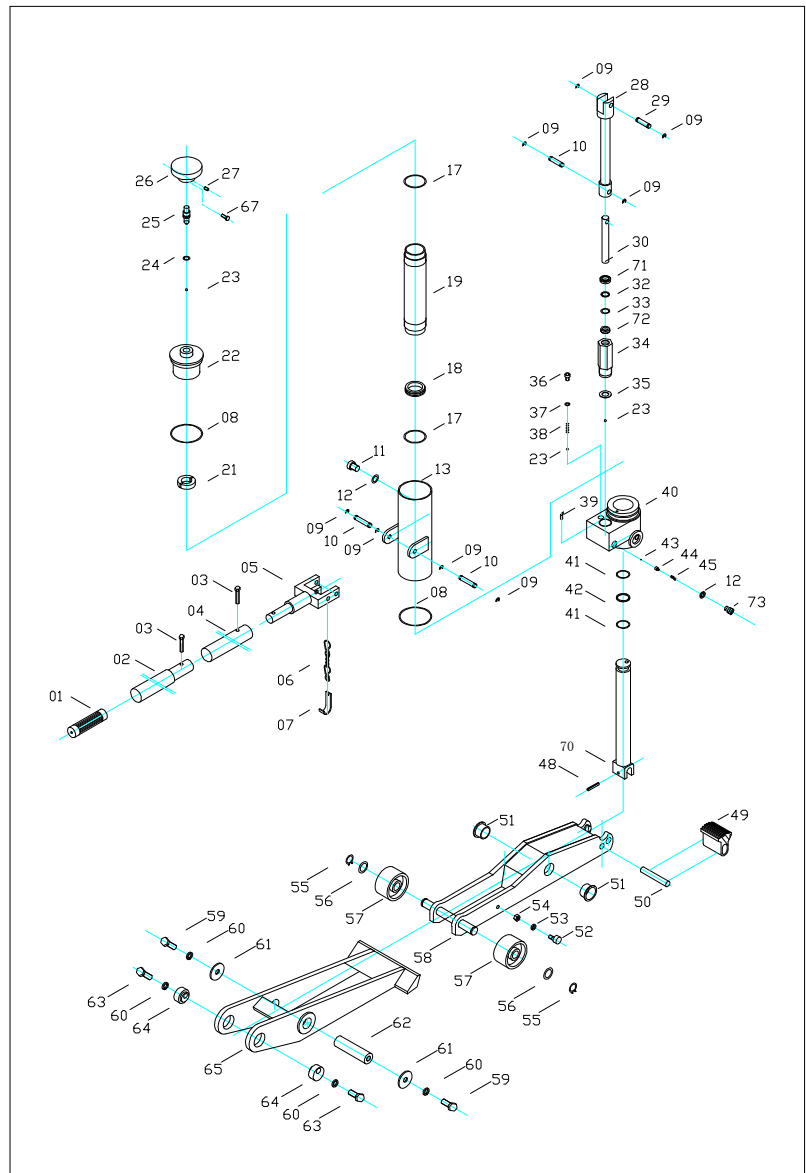
Jack Model 14370

## ! WARNING !

To avoid serious personal injury, always wear proper protective gear, such as hard hats, safety glasses, gloves, and steel toe shoes when using hydraulic equipment. Failure to chock the wheels and crib the vehicle can result in Serious injury or death. Always deflate tires before removing a wheel, a rim, or part of a rim clamp or nut. If you do not deflate the tire, the tire could explode, causing serious injury or death. Always stand to one side of the rim when using the bead breaker. Standing to one side of the bead breaker allows you to maintain control of the bead breaker. If it is not seated properly and flies off the rim, the bead breaker could cause serious injury or death.



Rated capacity	7000kg/15400lbs
Starting pad height (notch)	65mm/2-1/2inches
Max.raised height	420mm/16-1/2inches
Width	250mm/9-4/5inches
Weight	48kg/105.6lbs





# INSTRUCTION MANUAL

## ! WARNING !

To avoid serious personal injury, always wear proper protective gear, such as hard hats, safety glasses, gloves, and steel toe shoes when using hydraulic equipment. Failure to chock the wheels and crib the vehicle can result in Serious injury or death. Always deflate tires before removing a wheel, a rim, or part of a rim clamp or nut. If you do not deflate the tire, the tire could explode, causing serious injury or death. Always stand to one side of the rim when using the bead breaker. Standing to one side of the bead breaker allows you to maintain control of the bead breaker. If it is not seated properly and flies off the rim, the bead breaker could cause serious injury or death.



## Parts List For

7.5 Ton Forklift Jack

Model 14370

NO	DESCRIPTION	QTY	NO	DESCRIPTION	QTY
01	Grip	1	38	Spring	1
02	Handle 1	1	39	Magnet Steel	1
03	Screw	2	40	Valve Block	1
04	Handle 2	1	41	O-Ring	2
05	Handle Base	1	42	Back-Up Ring	1
06	Chain	1	43	Ball	1
07	Chain Hook	1	44	Ball Seat	1
08	O-Ring	2	45	Spring	1
09	Retaining Ring	10	48	Pin	1
10	Pin	3	49	Saddle	1
11	Screw	1	50	Pin	1
12	O- Ring	2	51	Spacer	2
13	Oil Tank	1	52	Screw	2
17	O-Ring	2	53	Lock Washer	2
18	Port Ring	1	54	Nut	2
19	Cylinder	1	55	Snap Ring	2
21	Piston	1	56	Washer	2
22	Valve Seat	1	57	Wheel	2
23	Ball	3	58	Frame 2	1
24	O-Ring	1	59	Screw	2
25	Release Rod	1	60	Lock Washer	4
26	Release Knob	1	61	Washer	2
27	Pin	1	62	Axle	1
28	Link Rod	1	63	Screw	2
29	Pin	1	64	Trunnion	2
30	Plunger	1	65	Frame 1	1
32	Back-Up Ring	1	67	Screw	1
33	O-Ring	1	70	Piston Rod	1
34	Pump	1	71	Wiper	1
35	Seal Ring	1	72	Y-Ring	1
36	Screw	1	73	Screw	1
37	Seal Ring	1			

2347 Circuit Way, Brooksville, Florida, USA 34604

Phone: (+1) 352-799-1111 Toll Phone: (+1) 877-775-4AME (4263)

Fax: (+1) 352-799-1112 E-mail: sales@ameintl.net www.ameintl.net